



**Presents**

**The Interactive Musical Experience**

*Swan Trudy* and the **Peppermint Prince**

By Maria Simeone



**An Interactive Fairytale Inspired by the Music of Peter Ilyich Tchaikovsky**

**Preparation Guide**

**For K and 1 classroom teachers and their students**

## The Interactive Musical Experience (IME) for grades K-1



*Swan Trudy and The Peppermint Prince* is an exciting tale of a young swan who discovers that courage and determination can have magical results! Throughout the IME you and your students will read, sing and move their way through the story.



To ensure a successful IME experience for you and your students, it's **important that you familiarize** your students with the vocabulary, movements and Prince Peppermint's "Birth Song"\*. These materials, as well as the story, have been created especially for you – so enjoy! They are ready-to-use and can be found on the next two pages.



Feel free to project your students' materials directly using your Elmo Projector and/or create transparencies for your overhead projector. We have also sent an electronic version of this document to your Principal and Teacher Representatives, so if you have a computer and projection system, you may wish to request an electronic copy. Electronic copies can also be obtained by e-mailing Class Act Director Susan Miller at [smiller@pacificsymphony.org](mailto:smiller@pacificsymphony.org).



**Thank you in advance for taking the time to review these important elements with your students before their IME.** Taking a little time in the classroom to teach them the "Birth Song"\* and to review the reading icons and action words will help them to get the greatest benefit from our time with them!

**If you would like to explore these fun moves and the singing of the Birth Song\* in the context of the story, we encourage you to down-load the fairytale at:**

[www.pacificsymphony.org/classact](http://www.pacificsymphony.org/classact)

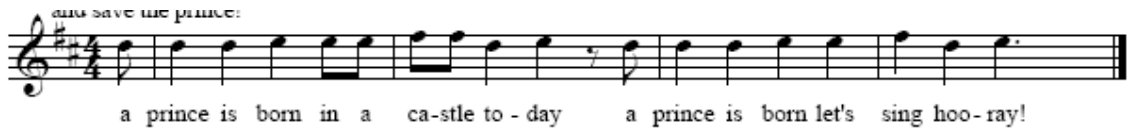
**\*A "Birth Song"** is a special song that is closely associated with a person. It is sung to celebrate special occasions as well as during daily rituals such as bedtime. Perhaps your students have a special song that is sung to them by someone significant in their life. **You'll discover Prince Peppermint's Birth Song on the next page. It uses the melody from Tchaikovsky's "March", the very first part of Track #1 on your Tchaikovsky CD.**

You might like to encourage children to create their own "birth song" by composing rhyming words to a favorite melody or use one of the familiar melodies found on your Tchaikovsky CD!

# Can YOU SING Prince Peppermint's Birth Song?

## Prince Peppermint's Birth Song\*

(see Track #1 on your Teacher CD for melody – [The Nutcracker March])



*A Prince is born in a castle today  
A Prince is born, let's sing hooray!*



Can YOU READ these words with



Prince Peppermint?



Birthday



castle



door



magic



Song



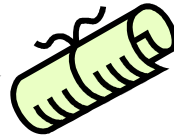
owl



tree




swan



Scroll



candy

Make these **MOVES** with  Swan Trudy by only using the *UPPER-HALF* of your body!

**March**                      High                      **TAP -TAP -TAP**                      *tip-toe*

low                      windy                      zig- zaggy                      **quiver**

swam                      soared                      Swung                      **d  
o  
w  
n**