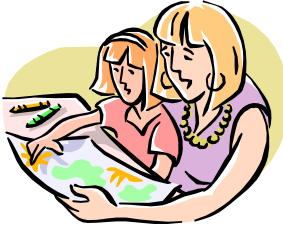
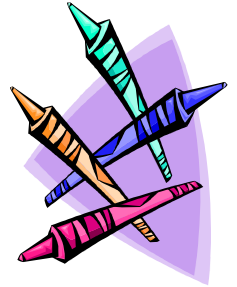


NEWSFLASH!!

Our concert needs your art work!



The Family Musical Mornings Concert on February 3, 2007 is called *Pictures at an Exhibition*. The music for that concert was inspired by a series of paintings the composer saw in a museum.



We need your help to create artwork for us to show during the concert. We hope you will draw, paint, or collage a picture based on the music in *Pictures at an Exhibition*. Once you create your artwork, send it in to the Pacific Symphony and we will display it in the lobby and during the concert on February 3.



We hope you will enjoy this opportunity to be creative! We can't wait to see your artwork!

Here is what you do:

- Listen to a recording of *Pictures at an Exhibition*. There are several ways you can do so. Here is a website where you can listen to short examples and then download the recording for free: <http://www.emusic.com/album/10874/10874337.html>. Or you can borrow the CD from your local library. Please ask your librarian for *Pictures at an Exhibition*, by Mussorgsky, orchestrated by Ravel.
- After you have listened to the CD, choose your favorite moment from the music and draw what you imagined as you listened.
- Please draw your picture on a piece of white paper measuring 8.5" by 11". Please put the following information on the back of the picture:
 - Your name, age, full address, and the part of *Pictures at an Exhibition* that inspired you.
- Mail your artwork to: Rachel Ligatti, Pacific Symphony, 3631 South Harbor Blvd., Ste. 100, Santa Ana, CA 92704.
- All artwork must be received by January 15, 2007 to guarantee inclusion in the concert.
- Artwork will be returned after the performance on Feb. 3, 2006.

